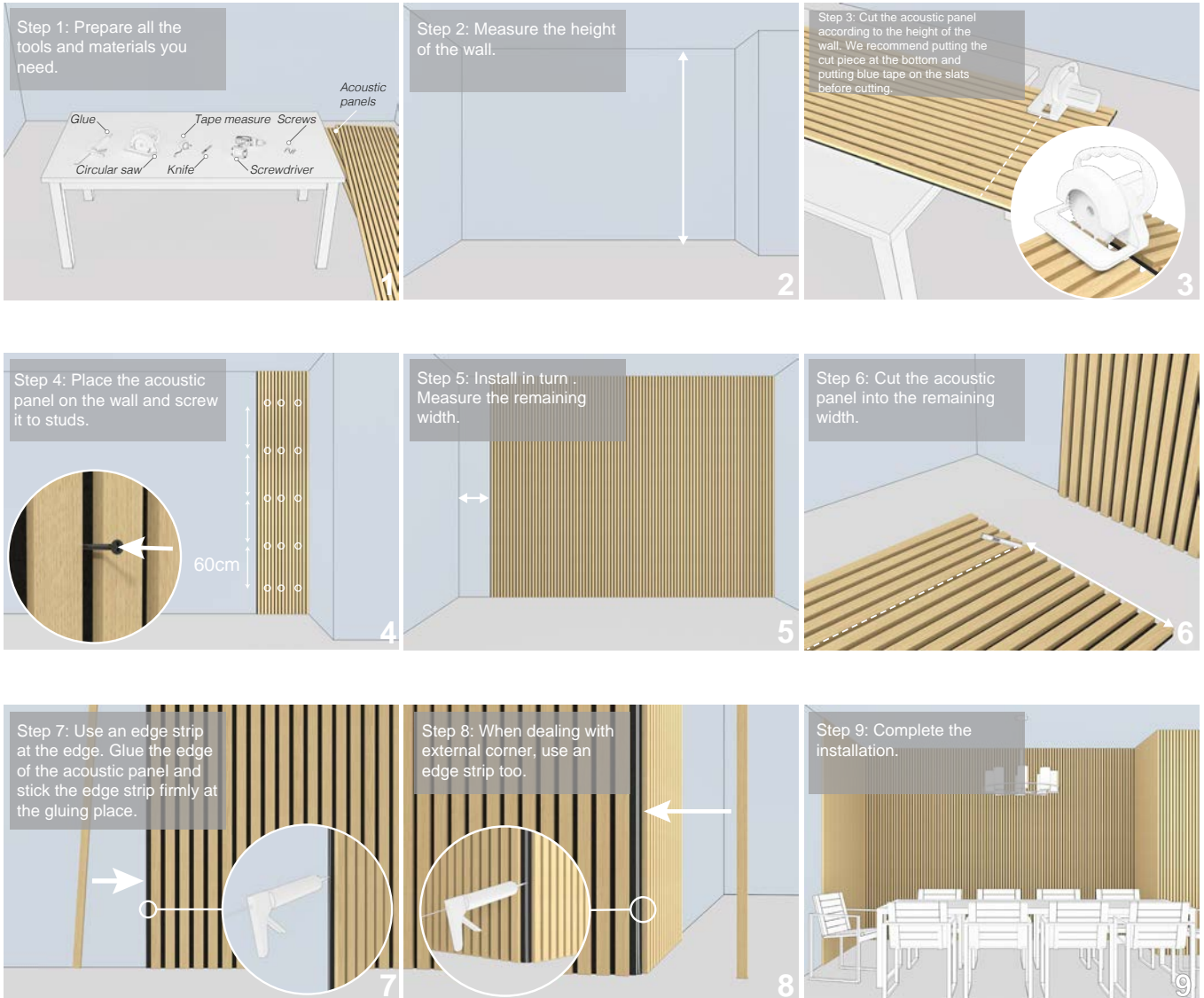


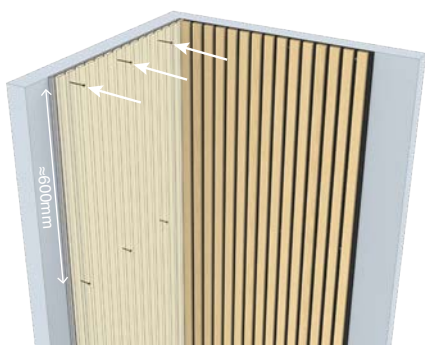
# PARALLELS™

ACOUSTIC VERTICAL SLAT WOOD WALL COVERINGS

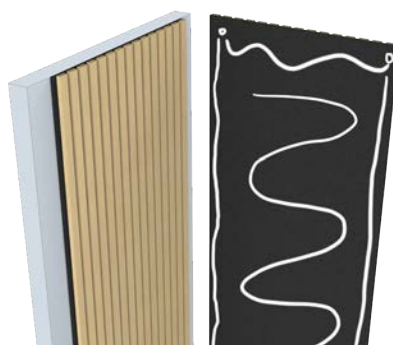
## INSTALLATION INSTRUCTIONS



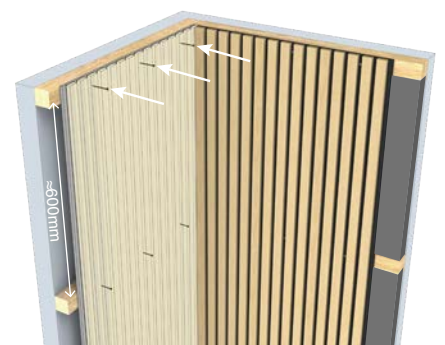
### All installation options:



**1.** Screw acoustic panels directly to the wall.



**2.** Attach acoustic panels to the wall with nail-free glue.



**3.** Install fiberglass wool or rock wool between the battens.