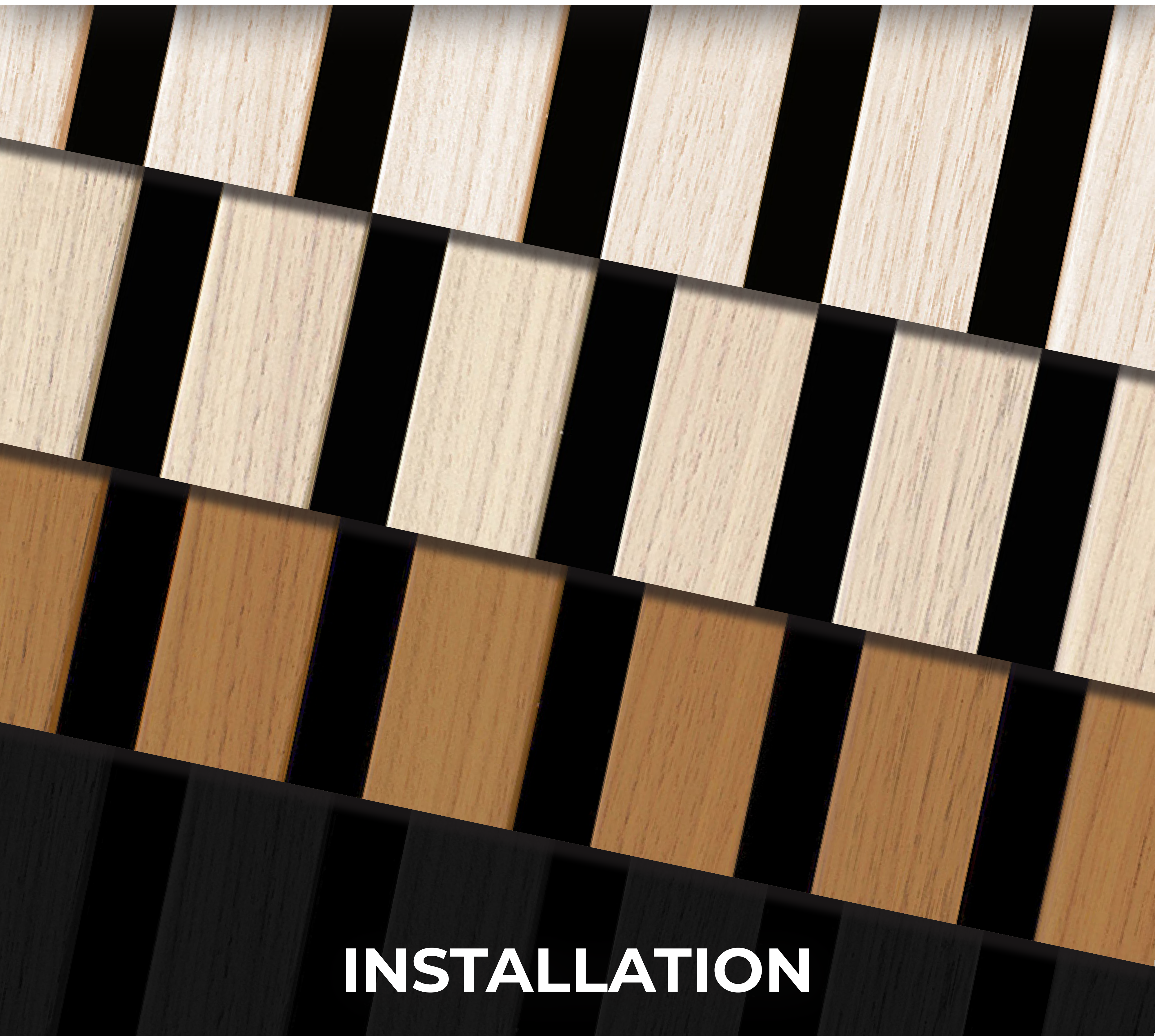


GARRISON

# PARALLELS<sup>TM</sup>

**ACOUSTIC VERTICAL SLAT WOOD  
WALL COVERINGS**



**INSTALLATION**



# Installation Instructions

## Dimensions

Garrison Parallels™ come in 10’ panels, moulding corner, and handsets in our four colors (Ivory, Natural Oak, Warm Oak, Midnight)

**Info:**

Each box contains two panels, both measuring 120” x 24”. These panels will join next to each other seamlessly.

**Each box covers:**

- 120” / 3048mm (H)
- 24” / 609mm (W)
- 0.87” / 21mm (D)

**Properties of real wood veneer:**

Natural wood veneer can vary in color, grain structure and appearance from strip to strip and panel to panel.  
\*Only applies to Ivory, Natural Oak, and Warm Oak

## Care and Maintenance

We recommend adding a protective finish to the panels if possible. Something like wood oil is perfect as it protects and keeps the natural look and feel of the wood. Once this is applied, light dusting or hovering will prevent any dust build-up. If you choose to keep the panels without a finish, then a dry cloth can wipe the panels down.

## Fire Rating

The acoustic felt backing carries a class A fire rating following certification ASTM E84-16.

## How to cut Parallels

We recommend a sharp saw to cut through the slats and felt width ways.

A craft knife can be used to cut through the felt to cut lengthways.

## How to install Parallels

There are three different options for installing Garrison Parallels:

**1. Glueing straight into the wall**

A construction glue or grab adhesive is recommended for this.

**2. Screwing directly into the wall:**

Using black screws for the black backing option or silver or grey screws for the grey-backing, the panels can be screwed directly into the wall through the acoustic felt.

We recommend a minimum of 9 screws per panel at 3.15” intervals across the width and 24” intervals down the length of the panel.

If installing into ceilings, make sure they are screwed into ceiling joists.

Please make sure the correct fixings are used if going into plasterboard, for example.

**3. Screwing the panels into 1.8” timber battens:**

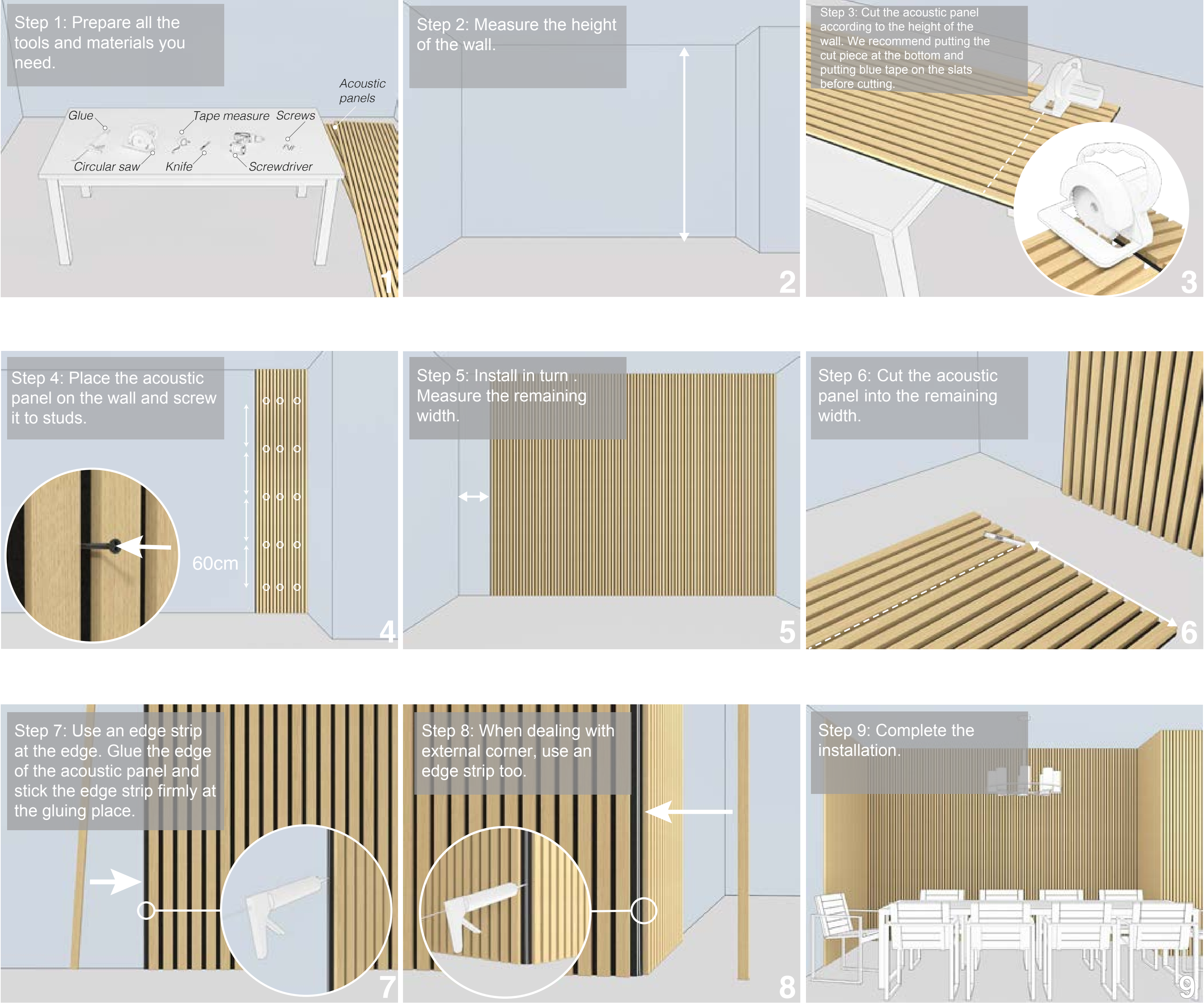
We recommend screwing 1.8” timber batons to the wall and then screwing the panels directly into the batons through the acoustic felt to achieve optimum sound absorption.

Combined with Rockwool behind the panels between the batons, this will achieve Class A sound absorption.

For graphs and technical drawings, please see page 3.

For installation help please contact:

800.556.9003



All installation options:

